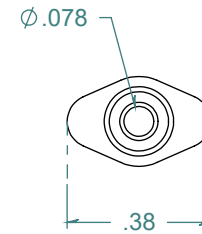
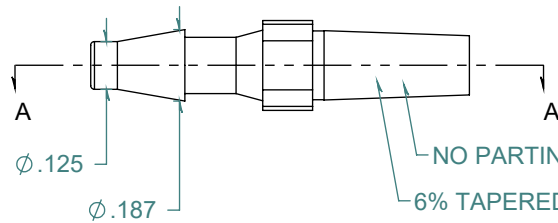
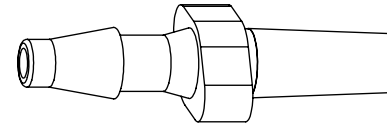
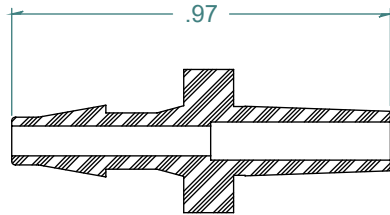


REVISION HISTORY			
REV.	DESCRIPTION	DATE	APPROVED
A	Redrawn w/Change	10/05/2009	KAH
B	ECOR #A0144	10/05/2009	KAH
C	ECOR #A0729	10/12/2012	KAH

SECTION A-A



DIMENSIONS ARE IN INCHES UNLESS SPECIFIED. TOLERANCES ARE:
 FRACTIONS +/- .015
 2 PLACE DECIMAL +/- .010
 3 PLACE DECIMAL +/- .005
 ANGLES NOTED

ARK-PLAS PRODUCTS, INC.

LCX54-YC0
 1/8" BARBED MALE SLIP LUER

FREE SAMPLES ARE AVAILABLE FOR TESTING. CONTACT CUSTOMER SERVICE

MATERIAL:
 CLEAR POLYCARBONATE

LUER DESIGNED TO **ISO** STANDARDS

FINISH: 27 CHARMILLES
 POLISHED LUER

SIZE A	JOB # MP281	DRAWN BY: <i>KAH</i>	REV. LEVEL C
SCALE: 2:1 DO NOT SCALE DRAWING		SHEET 1 OF 1	

PROPRIETARY AND CONFIDENTIAL

THE INFORMATION CONTAINED IN THIS DRAWING IS THE SOLE PROPERTY OF ARK-PLAS PRODUCTS, INC. ANY REPRODUCTION IN PART OR AS A WHOLE WITHOUT THE WRITTEN PERMISSION OF ARK-PLAS PRODUCTS, INC. IS PROHIBITED.