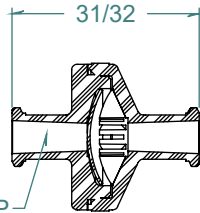
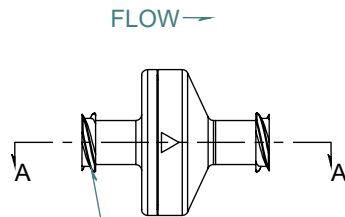


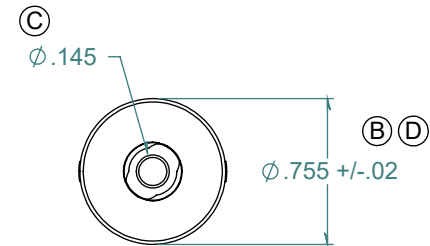
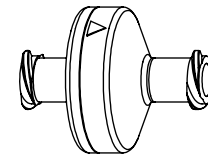
SECTION A-A
SCALE 1 : 1



6% TAPERED FEMALE TYP



5 TPI DOUBLE LEAD RIGHT HAND THREAD TYP



REVISION HISTORY			
REV.	DESCRIPTION	DATE	APPROVED
A	REDRAWN w/ CHANGE	10/05/2011	KAH
B	ECOR #A0579	10/05/2011	KAH
C	ECOR #A0657	10/05/2011	KAH
D	ECOR #A0956	05/18/2016	KAH

DIMENSIONS ARE IN INCHES UNLESS SPECIFIED. TOLERANCES ARE:
 FRACTIONS +/- .015
 2 PLACE DECIMAL +/- .010
 3 PLACE DECIMAL +/- .005
 ANGLES NOTED

ARK-PLAS PRODUCTS, INC.

HFX84-YC0
 FEMALE x FEMALE LUER CHECK VALVE
 w/ SILICONE DIAPHRAGM

FREE SAMPLES ARE AVAILABLE FOR TESTING. CONTACT CUSTOMER SERVICE

MATERIAL:
 POLYCARBONATE, NATURAL

LUERS DESIGNED TO ISO STANDARDS

FINISH:
 RMS 109.2 / POLISHED LUERS

SIZE	JOB # AP308	DRAWN BY: <i>KAH</i>	REV. LEVEL
A	SCALE: 1:1 DO NOT SCALE DRAWING	SHEET 1 OF 1	D

PROPRIETARY AND CONFIDENTIAL
 THE INFORMATION CONTAINED IN THIS DRAWING IS THE SOLE PROPERTY OF ARK-PLAS PRODUCTS, INC. ANY REPRODUCTION IN PART OR AS A WHOLE WITHOUT THE WRITTEN PERMISSION OF ARK-PLAS PRODUCTS, INC. IS PROHIBITED.