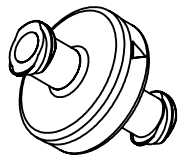
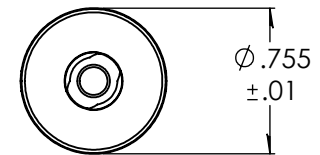
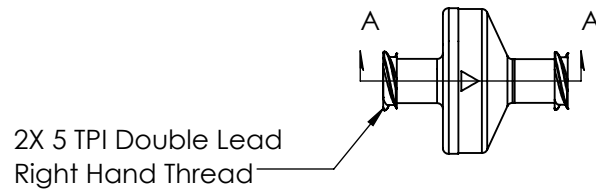
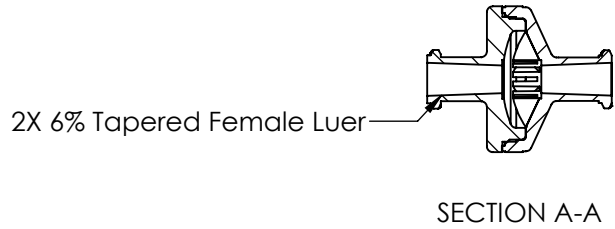


Revision History

Rev.	Description	Date	Approved
A	Print Release Date	11/13/2023	JWM



Unless otherwise specified tolerances are in inches SAE Tolerances Fractions: +/- .015 2 Place Decimal: +/- .010 3 Place Decimal: +/- .005 Angle: +/- 1/2*			
Material: Gamma Stable Polycarbonate 2081-15		Part #: HFX84-GP0 Description: Female x Female Luer Check Valve Luer Designed To ISO Standards Silicone Diaphragm	
Size A	Job#: HFX84 Scale: 1:1	Sheet 1 of 1 Drawn By: JWM	Rev A