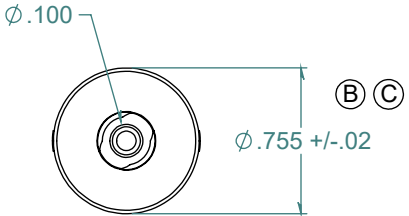
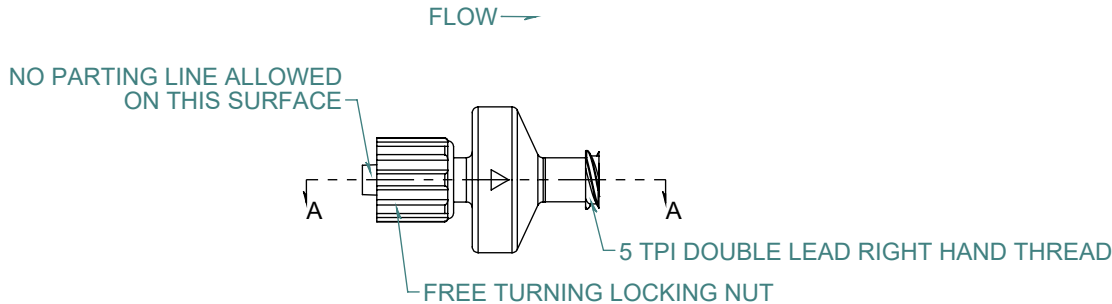
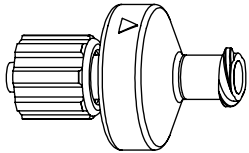
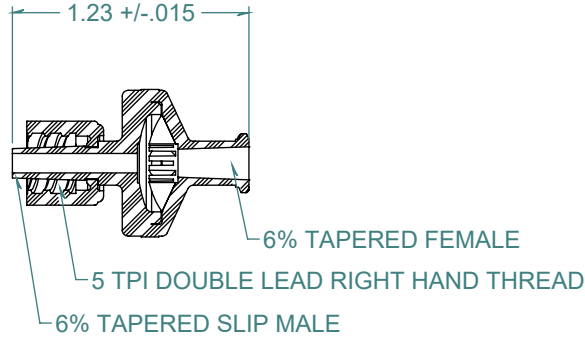


REVISION HISTORY			
REV.	DESCRIPTION	DATE	APPROVED
A	REDRAWN w/ CHANGE	10/05/2011	KAH
B	ECOR #A0578	10/05/2011	KAH
C	ECOR #A0956	05/18/2016	KAH

SECTION A-A



DIMENSIONS ARE IN INCHES UNLESS SPECIFIED. TOLERANCES ARE:

FRACTIONS	+/- .015
2 PLACE DECIMAL	+/- .010
3 PLACE DECIMAL	+/- .005
4 PLACE DECIMAL	+/- .0005
ANGLES	NOTED

**ARK-PLAS PRODUCTS, INC.**

HF63-YC0  
 MALE x FEMALE LUER CHECK VALVE  
 w/ SILICONE DIAPHRAGM

FREE SAMPLES ARE AVAILABLE FOR TESTING. CONTACT CUSTOMER SERVICE

MATERIAL:  
 POLYCARBONATE, NATURAL

**LUERS DESIGNED TO ISO STANDARDS**

FINISH:  
 RMS 109.2  
 POLISHED LUERS

SIZE <b>A</b>	JOB # AP310	DRAWN BY: <i>KAH</i>	REV. LEVEL
	SCALE: 1:1	SHEET 1 OF 1	<b>C</b>

PROPRIETARY AND CONFIDENTIAL  
 THE INFORMATION CONTAINED IN THIS DRAWING IS THE SOLE PROPERTY OF  
 ARK-PLAS PRODUCTS, INC. ANY REPRODUCTION IN PART OR AS A WHOLE  
 WITHOUT THE WRITTEN PERMISSION OF ARK-PLAS PRODUCTS, INC. IS PROHIBITED.