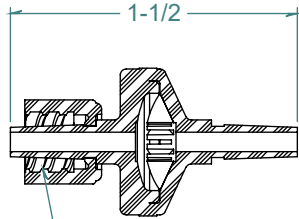
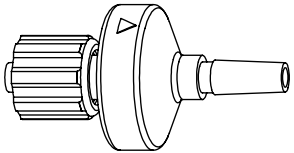


REVISION HISTORY			
REV.	DESCRIPTION	DATE	APPROVED
A	REDRAWN w/ CHANGE	10/05/2011	KAH
B	ECOR #A0578	10/05/2011	KAH
C	ECOR #A0956	05/18/2016	KAH

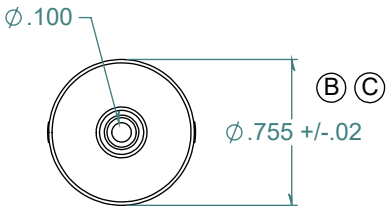
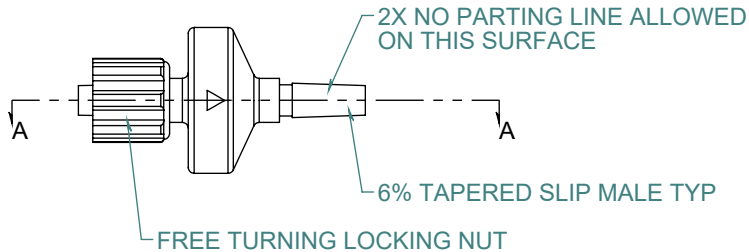
SECTION A-A



5 TPI DOUBLE LEAD RIGHT HAND THREAD



FLOW →



DIMENSIONS ARE IN INCHES UNLESS SPECIFIED. TOLERANCES ARE:
 FRACTIONS +/- .015
 2 PLACE DECIMAL +/- .010
 3 PLACE DECIMAL +/- .005
 4 PLACE DECIMAL +/- .0005
 ANGLES NOTED

MATERIAL:
 POLYCARBONATE, NATURAL

FINISH:
 RMS 109.2
 POLISHED BARBS

ARK-PLAS PRODUCTS, INC.

HFX60-YC0
 MALE x MALE LUER CHECK VALVE
 w/ SILICONE DIAPHRAGM

LUERS DESIGNED TO ISO STANDARDS

FREE SAMPLES ARE AVAILABLE FOR TESTING. CONTACT CUSTOMER SERVICE

PROPRIETARY AND CONFIDENTIAL
 THE INFORMATION CONTAINED IN THIS DRAWING IS THE SOLE PROPERTY OF
 ARK-PLAS PRODUCTS, INC. ANY REPRODUCTION IN PART OR AS A WHOLE
 WITHOUT THE WRITTEN PERMISSION OF ARK-PLAS PRODUCTS, INC. IS PROHIBITED.

SIZE	JOB # AP309	DRAWN BY: <i>KAH</i>	REV. LEVEL
A	SCALE: 1:1	SHEET 1 OF 1	C