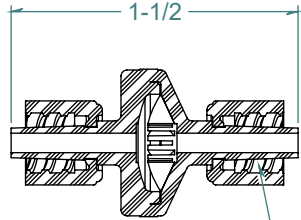
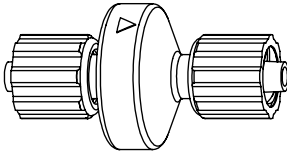


REVISION HISTORY			
REV.	DESCRIPTION	DATE	APPROVED
A	REDRAWN w/ CHANGE	10/05/2011	KAH
B	ECOR #A0578	10/05/2011	KAH
C	ECOR #A0956	05/18/2016	KAH

SECTION A-A

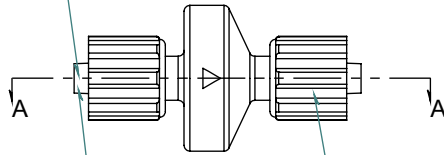


5 TPI DOUBLE LEAD RIGHT HAND THREAD TYP



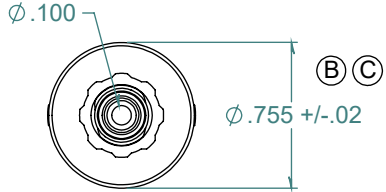
2X NO PARTING LINE ALLOWED ON THIS SURFACE

FLOW →



FREE TURNING LOCKING NUT TYP

6% TAPERED SLIP MALE TYP



DIMENSIONS ARE IN INCHES UNLESS SPECIFIED. TOLERANCES ARE:
 FRACTIONS +/- .015
 2 PLACE DECIMAL +/- .010
 3 PLACE DECIMAL +/- .005
 ANGLE NOTED

ARK-PLAS PRODUCTS, INC.

HFX28-YC0
 MALE x MALE LUER CHECK VALVE
 w/ SILICONE DIAPHRAGM

MATERIAL:
 POLYCARBONATE, NATURAL

LUERS DESIGNED TO ISO STANDARDS

FINISH: RMS 109.2
 POLISHED BARBS

SIZE	JOB # AP309	DRAWN BY: <i>KAH</i>	REV. LEVEL
A	SCALE: 1:1 DO NOT SCALE DRAWING	SHEET 1 OF 1	C

FREE SAMPLES ARE AVAILABLE FOR TESTING. CONTACT CUSTOMER SERVICE

PROPRIETARY AND CONFIDENTIAL

THE INFORMATION CONTAINED IN THIS DRAWING IS THE SOLE PROPERTY OF ARK-PLAS PRODUCTS, INC. ANY REPRODUCTION IN PART OR AS A WHOLE WITHOUT THE WRITTEN PERMISSION OF ARK-PLAS PRODUCTS, INC. IS PROHIBITED.