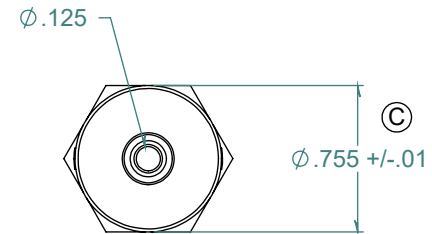
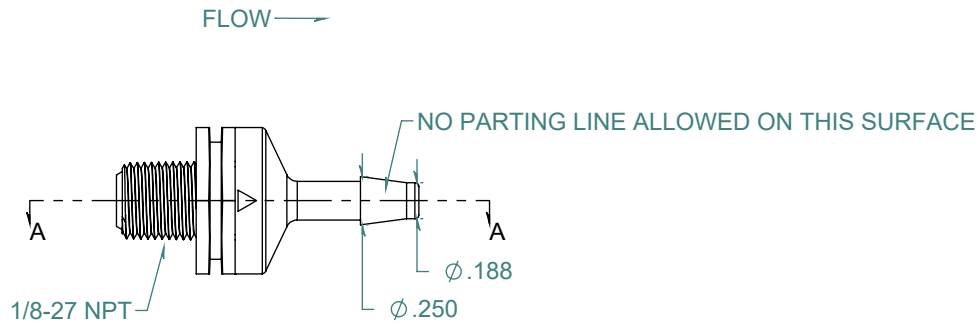
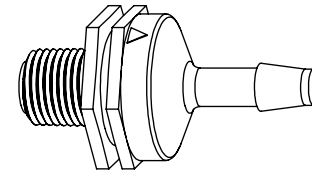
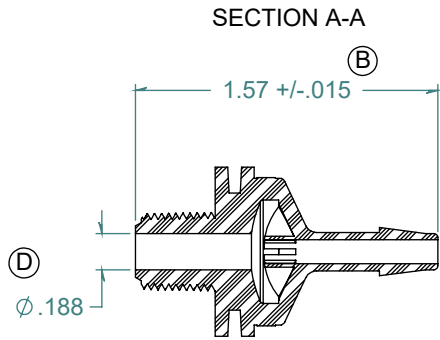


REVISION HISTORY			
REV.	DESCRIPTION	DATE	APPROVED
A	REDRAWN w/ CHANGE	01/21/2010	KAH
B	ECOR #A0549	01/21/2010	KAH
C	ECOR #A0661	02/24/2011	KAH
D	ECOR #A0952	05/13/2016	KAH



FREE SAMPLES ARE AVAILABLE FOR TESTING. CONTACT CUSTOMER SERVICE

PROPRIETARY AND CONFIDENTIAL

THE INFORMATION CONTAINED IN THIS DRAWING IS THE SOLE PROPERTY OF ARK-PLAS PRODUCTS, INC. ANY REPRODUCTION IN PART OR AS A WHOLE WITHOUT THE WRITTEN PERMISSION OF ARK-PLAS PRODUCTS, INC. IS PROHIBITED.

DIMENSIONS ARE IN INCHES UNLESS SPECIFIED. TOLERANCES ARE:
 FRACTIONS +/- .015
 2 PLACE DECIMAL +/- .010
 3 PLACE DECIMAL +/- .005
 ANGLES NOTED

MATERIAL:
 CLEAR POLYCARBONATE

FINISH:
 RMS 109.2 / POLISHED BARB

ARK-PLAS PRODUCTS, INC.

HEX40-YC0
 1/8-27 NPT x 3/16" PREMIUM GRADE
 THREADED CHECK VALVE

SILICONE DIAPHRAGM

SIZE A	JOB # MP141 MP145	DRAWN BY: <i>KAH</i>	REV. LEVEL D
SCALE: 2:1 DO NOT SCALE DRAWING		SHEET 1 OF 1	