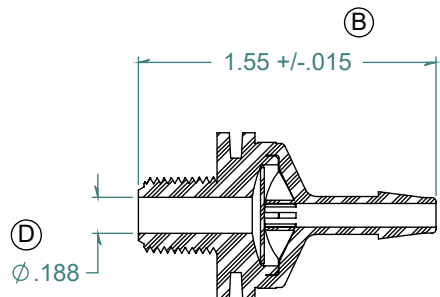
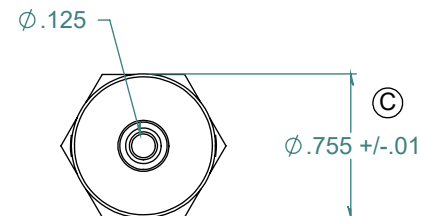
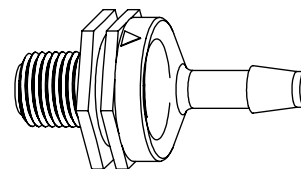
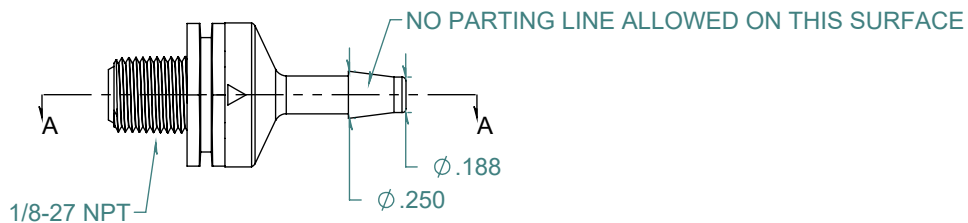


SECTION A-A



FLOW →



REVISION HISTORY			
REV.	DESCRIPTION	DATE	APPROVED
A	REDRAWN w/ CHANGE	01/21/2010	KAH
B	ECOR #A0550	01/21/2010	KAH
C	ECOR #A0661	02/24/2011	KAH
D	ECOR #A0952	05/13/2016	KAH

DIMENSIONS ARE IN INCHES UNLESS SPECIFIED. TOLERANCES ARE:
 FRACTIONS +/- .015
 2 PLACE DECIMAL +/- .010
 3 PLACE DECIMAL +/- .005
 ANGLES NOTED

ARK-PLAS PRODUCTS, INC.

HEX40-DF0
 1/8-27 NPT x 3/16" PREMIUM GRADE
 THREADED CHECK VALVE

VITON DIAPHRAGM

FREE SAMPLES ARE AVAILABLE FOR TESTING. CONTACT CUSTOMER SERVICE

MATERIAL:
 NATURAL KYNAR

FINISH:
 RMS 109.2 / POLISHED BARB

SIZE	JOB #	MP141 MP145	DRAWN BY: <i>KAH</i>	REV. LEVEL
A	SCALE:	1:1 DO NOT SCALE DRAWING	SHEET 1 OF 1	D

PROPRIETARY AND CONFIDENTIAL
 THE INFORMATION CONTAINED IN THIS DRAWING IS THE SOLE PROPERTY OF ARK-PLAS PRODUCTS, INC. ANY REPRODUCTION IN PART OR AS A WHOLE WITHOUT THE WRITTEN PERMISSION OF ARK-PLAS PRODUCTS, INC. IS PROHIBITED.