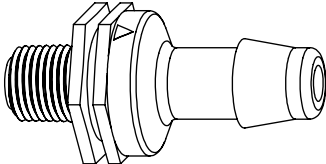
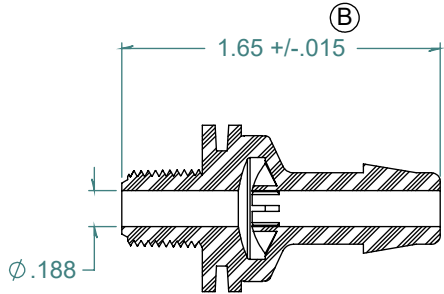
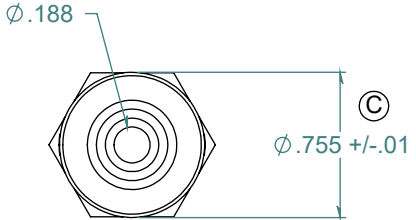
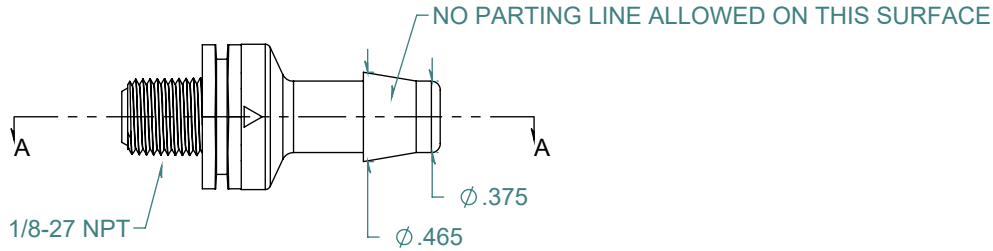


| REVISION HISTORY | | | |
|------------------|-------------------|------------|----------|
| REV. | DESCRIPTION | DATE | APPROVED |
| A | REDRAWN w/ CHANGE | 01/26/2010 | KAH |
| B | ECOR #A0554 | 01/26/2010 | KAH |
| C | ECOR #A0661 | 02/24/2011 | KAH |

SECTION A-A



FLOW →



FREE SAMPLES ARE AVAILABLE FOR TESTING. CONTACT CUSTOMER SERVICE

DIMENSIONS ARE IN INCHES UNLESS SPECIFIED. TOLERANCES ARE:
 FRACTIONS +/- .015
 2 PLACE DECIMAL +/- .010
 3 PLACE DECIMAL +/- .005
 ANGLES NOTED

ARK-PLAS PRODUCTS, INC.

HEX16-NY0
 1/8-27 NPT x 3/8" PREMIUM GRADE
 THREADED CHECK VALVE

SILICONE DIAPHRAGM

MATERIAL:
 NATURAL NYLON

FINISH:
 RMS 109.2 / POLISHED BARB

| | | | |
|------------------------------------|----------------------|----------------------|------------|
| SIZE A | JOB # MP141 MP147 | DRAWN BY: <i>KAH</i> | REV. LEVEL |
| SCALE: 1:1 DO NOT SCALE DRAWING | SHEET 1 OF 1 | | C |

PROPRIETARY AND CONFIDENTIAL
 THE INFORMATION CONTAINED IN THIS DRAWING IS THE SOLE PROPERTY OF ARK-PLAS PRODUCTS, INC. ANY REPRODUCTION IN PART OR AS A WHOLE WITHOUT THE WRITTEN PERMISSION OF ARK-PLAS PRODUCTS, INC. IS PROHIBITED.