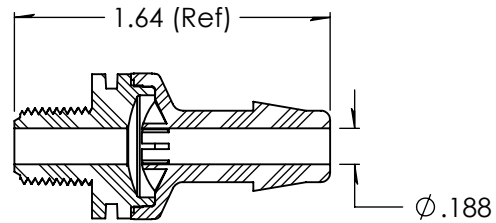
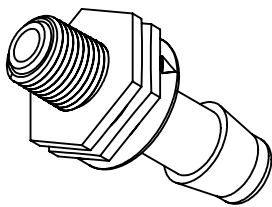
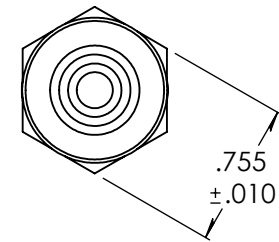
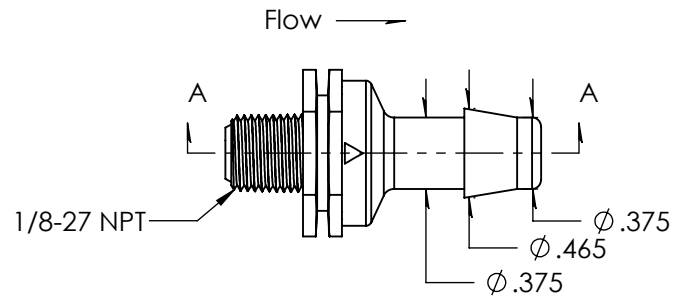


Revision History

Rev.	Description	Date	Approved
A	Print Release Date	11/12/2023	JWM



SECTION A-A



Unless otherwise specified tolerances are in inches

SAE Tolerances

Fractions:	+/- .015
2 Place Decimal:	+/- .010
3 Place Decimal:	+/- .005
Angle:	+/- 1/2*

Material:

Gamma Stable Polycarbonate
2081-15

ARKPLAS

Part #: HEX16-GP0

Description:
1/8-27 NPT x 3/8" Threaded Check Valve
Silicone Diaphragm

Size	Job#: HEX16	Sheet 1 of 1	Rev
A	Scale: 1:1	Drawn By: JWM	A