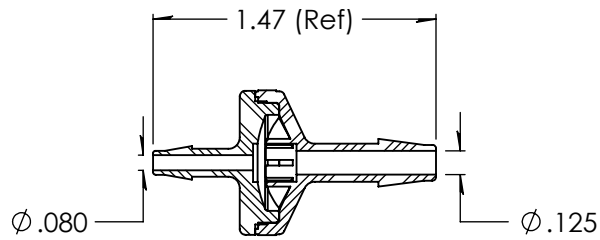
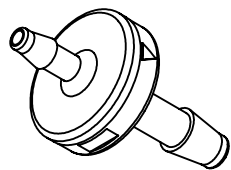
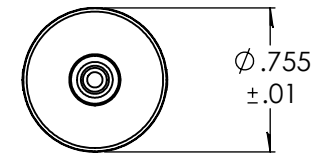
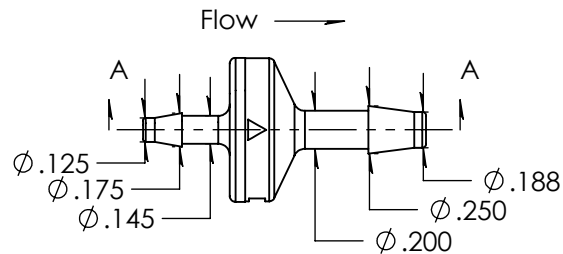


### Revision History

Rev.	Description	Date	Approved
A	Print Release Date	11/10/2023	JWM



SECTION A-A



Unless otherwise specified tolerances are in inches

#### SAE Tolerances

Fractions:	+/- .015
2 Place Decimal:	+/- .010
3 Place Decimal:	+/- .005
Angle:	+/- 1/2*

#### Material:

Gamma Stable Polycarbonate  
2081-15

# ARKPLAS

Part #: HDX99-GP0

Description:  
1/8" x 3/16" Enlarging Check Valve  
Silicone Diaphragm

Size	Job#: HDX99	Sheet 1 of 1	Rev
<b>A</b>	Scale: 1:1	Drawn By: JWM	<b>A</b>