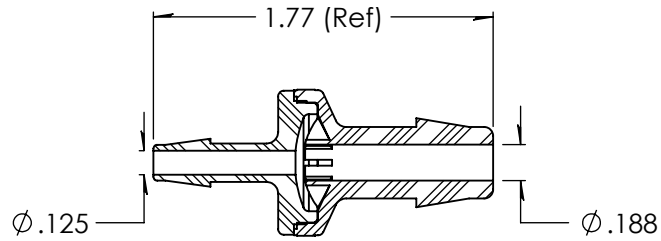
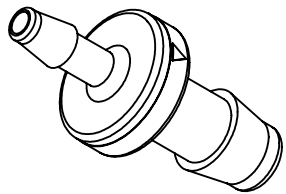
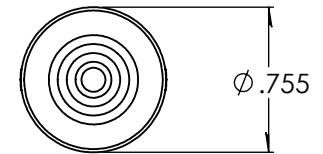
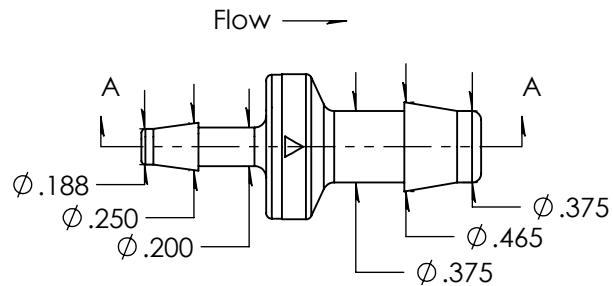


Revision History

| Rev. | Description | Date | Approved |
|------|--------------------|------------|----------|
| A | Print Release Date | 11/08/2023 | JWM |



SECTION A-A



Unless otherwise specified tolerances are in inches

SAE Tolerances

| | |
|------------------|----------|
| Fractions: | +/- .015 |
| 2 Place Decimal: | +/- .010 |
| 3 Place Decimal: | +/- .005 |
| Angle: | +/- 1/2* |

Material:

Natural Polypropylene
P4C5Z-027

ARKPLAS

Part #: HDX52-PP0

Description:
3/16" x 3/8" Enlarging Check Valve
Silicone Diaphragm

| | | | |
|------------------|-------------|---------------|-----------------|
| Size A | Job#: HDX52 | Sheet 1 of 1 | Rev A |
| | Scale: 1:1 | Drawn By: JWM | |