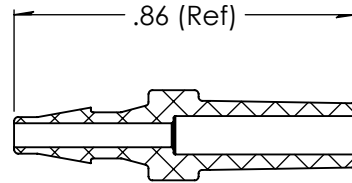
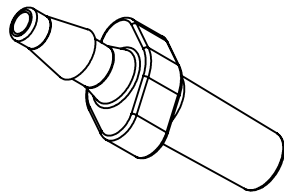
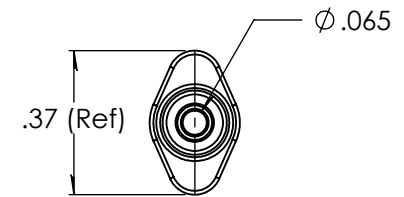
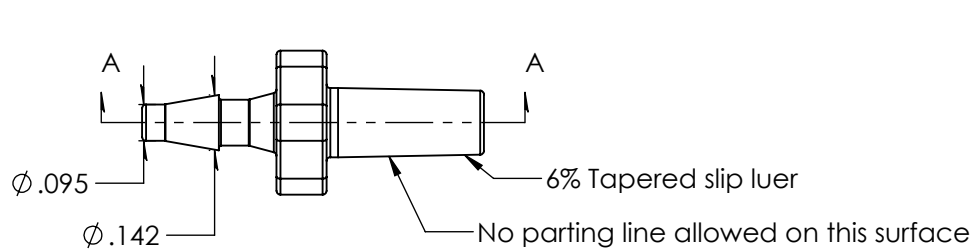


### Revision History

Rev.	Description	Date	Approved
A	Redrawn w/Change	10/05/2009	KAH
B	ECOR #A0144	10/05/2009	KAH
C	ECO	08/14/2023	JWM



SECTION A-A  
SCALE 2 : 1



Unless otherwise specified tolerances are in inches

#### SAE Tolerances

Fractions:	+/- .015
2 Place Decimal:	+/- .010
3 Place Decimal:	+/- .005
Angle:	+/- 1/2*

#### Material:

Natural Polycarbonate  
201-15

# ARKPLAS

Part #: LCX58-YC0

Description:  
3/32" Barbed Male Slip Luer  
Luer Designed To ISO Standards

Size	Job#: LCX58	Sheet 1 of 1	Rev
<b>A</b>	Scale: 1:1	Drawn By: JWM	<b>C</b>