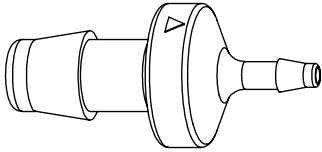
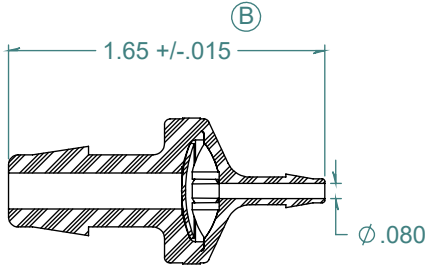


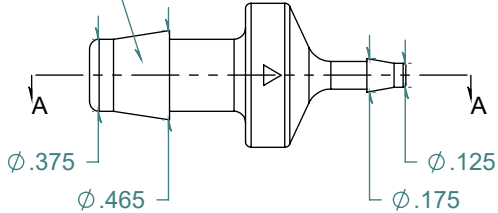
REVISION HISTORY			
REV.	DESCRIPTION	DATE	APPROVED
A	REDRAWN w/ CHANGE	02/15/2010	KAH
B	ECOR #A0565	02/15/2010	KAH

SECTION A-A



2X NO PARTING LINE ALLOWED ON THIS SURFACE

FLOW →



DIMENSIONS ARE IN INCHES UNLESS SPECIFIED. TOLERANCES ARE:
 FRACTIONS +/- .015
 2 PLACE DECIMAL +/- .010
 3 PLACE DECIMAL +/- .005
 ANGLES NOTED

ARK-PLAS PRODUCTS, INC.

HCX26-NY0
 3/8" x 1/8" PREMIUM GRADE
 REDUCING CHECK VALVE
 NEOPRENE DIAPHRAGM

MATERIAL:
 NATURAL NYLON

FINISH:
 RMS 109.2 / POLISHED BARBS

FREE SAMPLES ARE AVAILABLE FOR TESTING. CONTACT CUSTOMER SERVICE

PROPRIETARY AND CONFIDENTIAL
 THE INFORMATION CONTAINED IN THIS DRAWING IS THE SOLE PROPERTY OF ARK-PLAS PRODUCTS, INC. ANY REPRODUCTION IN PART OR AS A WHOLE WITHOUT THE WRITTEN PERMISSION OF ARK-PLAS PRODUCTS, INC. IS PROHIBITED.

SIZE	JOB #	MP140 MP142A	DRAWN BY: <i>KAH</i>	REV. LEVEL
A	SCALE:	1:1 DO NOT SCALE DRAWING	SHEET 1 OF 1	B