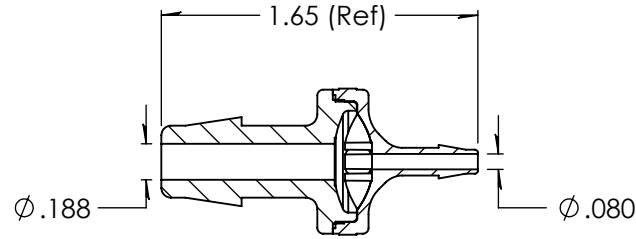
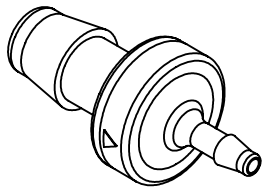
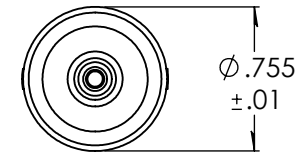
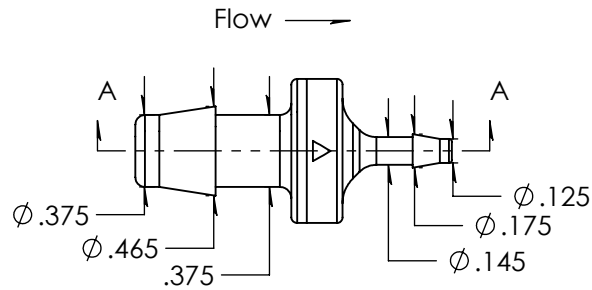


### Revision History

| Rev. | Description        | Date       | Approved |
|------|--------------------|------------|----------|
| A    | Print Release Date | 11/07/2023 | JWM      |



SECTION A-A



Unless otherwise specified tolerances are in inches

#### SAE Tolerances

|                  |          |
|------------------|----------|
| Fractions:       | +/- .015 |
| 2 Place Decimal: | +/- .010 |
| 3 Place Decimal: | +/- .005 |
| Angle:           | +/- 1/2* |

#### Material:

Gamma Stable Polycarbonate  
2081-15

# ARKPLAS

Part #: HCX12-GP0

Description:  
3/8" x 1/8" Reducing Check Valve  
Silicone Diaphragm

|          |             |               |          |
|----------|-------------|---------------|----------|
| <b>A</b> | Job#: HCX12 | Sheet 1 of 1  | <b>A</b> |
|          | Scale: 1:1  | Drawn By: JWM |          |