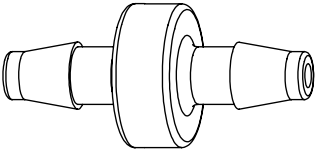
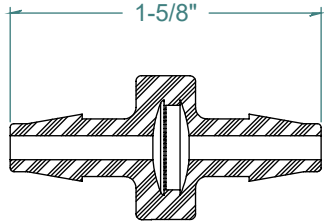
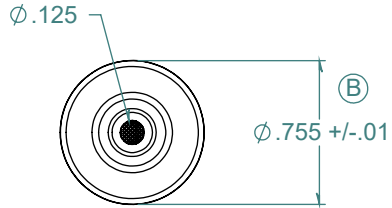
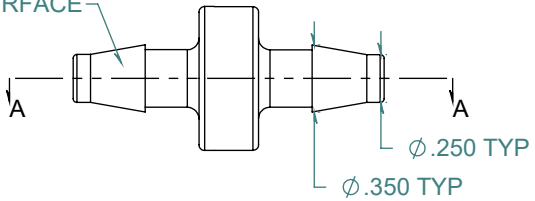


| REVISION HISTORY |                   |            |          |
|------------------|-------------------|------------|----------|
| REV.             | DESCRIPTION       | DATE       | APPROVED |
| A                | REDRAWN w/ CHANGE | 02/25/2010 | KAH      |
| B                | ECOR #A0583       | 02/25/2010 | KAH      |

SECTION A-A



2X NO PARTING LINE ALLOWED ON THIS SURFACE



DIMENSIONS ARE IN INCHES UNLESS SPECIFIED. TOLERANCES ARE:  
 FRACTIONS +/- .015  
 2 PLACE DECIMAL +/- .010  
 3 PLACE DECIMAL +/- .005  
 ANGLES NOTED

**ARK-PLAS PRODUCTS, INC.**

FCX14-PP0  
 1/4" x 1/4" PREMIUM GRADE  
 BARBED IN-LINE FILTER

STAINLESS STEEL 100 FILTER  
 100 MESH

FREE SAMPLES ARE AVAILABLE FOR TESTING. CONTACT CUSTOMER SERVICE

MATERIAL:  
 NATURAL POLYPROPYLENE

FINISH:  
 RMS 109.2 / POLISHED BARBS

|          |        |                |                      |            |
|----------|--------|----------------|----------------------|------------|
| SIZE     | JOB #  | MP135<br>MP139 | DRAWN BY: <i>KAH</i> | REV. LEVEL |
| <b>A</b> | SCALE: | 1:1            | SHEET 1 OF 1         | <b>B</b>   |
|          |        |                | DO NOT SCALE DRAWING |            |

**PROPRIETARY AND CONFIDENTIAL**  
 THE INFORMATION CONTAINED IN THIS DRAWING IS THE SOLE PROPERTY OF ARK-PLAS PRODUCTS, INC. ANY REPRODUCTION IN PART OR AS A WHOLE WITHOUT THE WRITTEN PERMISSION OF ARK-PLAS PRODUCTS, INC. IS PROHIBITED.