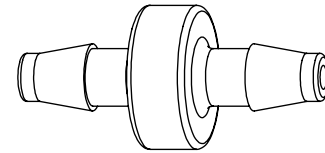
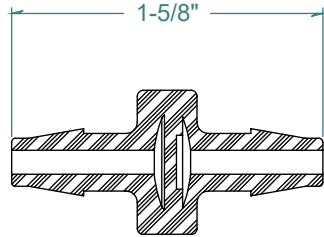
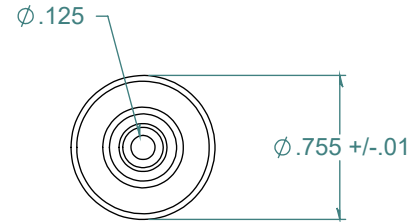
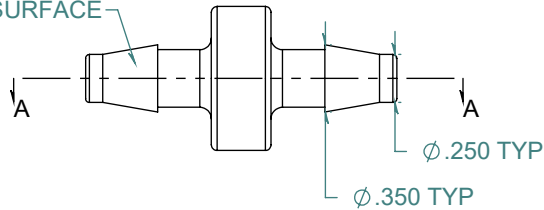


REVISION HISTORY			
REV.	DESCRIPTION	DATE	APPROVED
A	Redrawn w/Change	02/25/2010	KAH
B	ECOR #A0583	02/25/2010	KAH

SECTION A-A



2X NO PARTING LINE ALLOWED ON THIS SURFACE



DIMENSIONS ARE IN INCHES UNLESS SPECIFIED. TOLERANCES ARE:  
 FRACTIONS +/- .015  
 2 PLACE DECIMAL +/- .010  
 3 PLACE DECIMAL +/- .005  
 ANGLES NOTED

**ARK-PLAS PRODUCTS, INC.**

FAX88-NY0  
 1/4" x 1/4" PREMIUM GRADE  
 BARBED IN-LINE FILTER

HDPE 4903 FILTER  
 45 - 90 MICRON

FREE SAMPLES ARE AVAILABLE FOR TESTING. CONTACT CUSTOMER SERVICE

MATERIAL:  
 NATURAL NYLON

FINISH:  
 27 CHARMILLES

SIZE	JOB #	MP135 MP139	DRAWN BY: <i>KAH</i>	REV. LEVEL
<b>A</b>	SCALE:	1:1 DO NOT SCALE DRAWING	SHEET 1 OF 1	<b>B</b>

**PROPRIETARY AND CONFIDENTIAL**  
 THE INFORMATION CONTAINED IN THIS DRAWING IS THE SOLE PROPERTY OF ARK-PLAS PRODUCTS, INC. ANY REPRODUCTION IN PART OR AS A WHOLE WITHOUT THE WRITTEN PERMISSION OF ARK-PLAS PRODUCTS, INC. IS PROHIBITED.