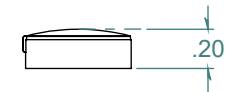
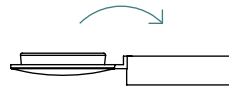
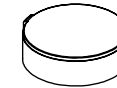
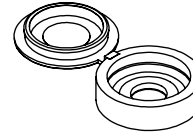
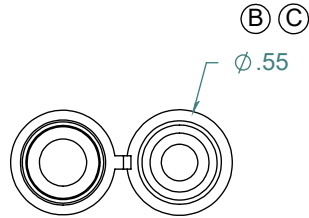


REVISION HISTORY			
REV.	DESCRIPTION	DATE	APPROVED
A	REDRAWN w/o CHANGE	03/22/2010	KAH
B	ECOR #A0613	07/27/2010	KAH
C	ECOR #A0642	12/01/2010	KAH



DIMENSIONS ARE IN INCHES UNLESS SPECIFIED. TOLERANCES ARE:
 FRACTIONS +/- .015
 2 PLACE DECIMAL +/- .010
 3 PLACE DECIMAL +/- .005
 ANGLES NOTED

ARK-PLAS PRODUCTS, INC.

DCX26-PR2
 #8 / #10 HINGED SCREW COVER

FREE SAMPLES ARE AVAILABLE FOR TESTING. CONTACT CUSTOMER SERVICE

MATERIAL:
 POLYPROPYLENE, WHITE

AVAILABLE IN OVER 100 STANDARD COLORS

PROPRIETARY AND CONFIDENTIAL
 THE INFORMATION CONTAINED IN THIS DRAWING IS THE SOLE PROPERTY OF ARK-PLAS PRODUCTS, INC. ANY REPRODUCTION IN PART OR AS A WHOLE WITHOUT THE WRITTEN PERMISSION OF ARK-PLAS PRODUCTS, INC. IS PROHIBITED.

FINISH:
 RMS 109.2

SIZE A	JOB # AP173	DRAWN BY: <i>KAH</i>	REV. LEVEL C
SCALE: 1:1 DO NOT SCALE DRAWING		SHEET 1 OF 1	