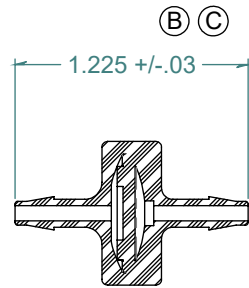
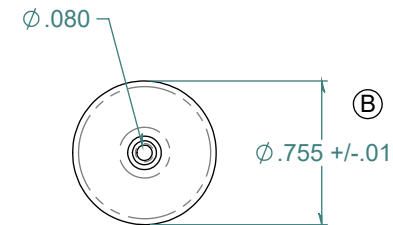
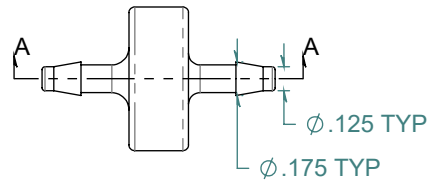
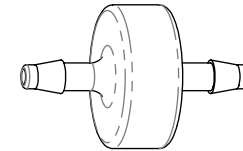


REVISION HISTORY			
REV.	DESCRIPTION	DATE	APPROVED
A	REDRAWN w/o CHANGE	01/12/2010	KAH
B	ECOR #A 0546	01/12/2010	KAH
C	ECOR #A0907	11/24/2015	KAH



SECTION A-A  
SCALE 1 : 1



DIMENSIONS ARE IN INCHES UNLESS SPECIFIED. TOLERANCES ARE:  
 FRACTIONS                    +/- .015  
 2 PLACE DECIMAL           +/- .010  
 3 PLACE DECIMAL           +/- .005  
 ANGLE                            +/- 1/2°

**ARK-PLAS PRODUCTS, INC.**

FAX21-NY0  
 1/8 x 1/8 HDPE INLINE FILTER  
 45-90 MICRON

FREE SAMPLES ARE AVAILABLE FOR TESTING. CONTACT CUSTOMER SERVICE

MATERIAL:  
 NYLON, NATURAL

FINISH:  
 RMS 109.2 / POLISHED BARBS

SIZE <b>A</b>	JOB # MP004A	DRAWN BY: <i>KAH</i>	REV. LEVEL <b>C</b>
SCALE: 1:1 DO NOT SCALE DRAWING		SHEET 1 OF 1	

**PROPRIETARY AND CONFIDENTIAL**  
 THE INFORMATION CONTAINED IN THIS DRAWING IS THE SOLE PROPERTY OF ARK-PLAS PRODUCTS, INC. ANY REPRODUCTION IN PART OR AS A WHOLE WITHOUT THE WRITTEN PERMISSION OF ARK-PLAS PRODUCTS, INC. IS PROHIBITED.