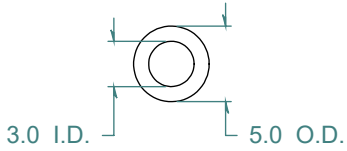
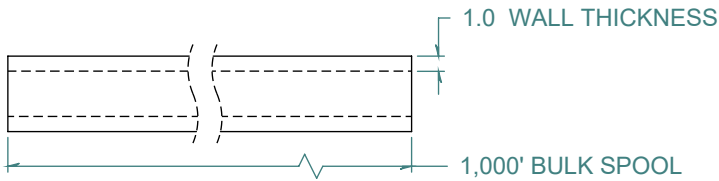
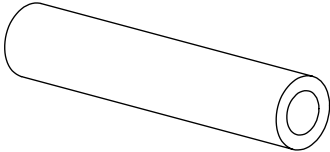


REVISION HISTORY			
REV.	DESCRIPTION	DATE	APPROVED
A	REDRAWN w/o CHANGE	05/12/2009	KAH



DIMENSIONS ARE IN METRIC UNLESS SPECIFIED. TOLERANCES ARE:

INNER DIAMETER +/- .127
 OUTER DIAMETER +/- .127
 WALL THICKNESS +/- .076

LENGTH TOLERANCES ARE:
 3048. OR MORE +5% / -0
 612.14 TO 3048. +25.4 / -0
 307.34 TO 609.6 +12.7 / -0
 154.94 TO 304.8 +6.35 / -0
 9.525 TO 152.4 +3.175 / -0

ARK-PLAS PRODUCTS, INC.

TCX82-FA0
 3.0 I.D. x 5.0 O.D.
 1.0 WALL THICKNESS / 1,000' BULK SPOOL

NATURAL, CLEAR METRIC TUBING

MATERIAL: VINYL (PVC) - 68 DUROMETER

FREE SAMPLES ARE AVAILABLE FOR TESTING. CONTACT CUSTOMER SERVICE

PROPRIETARY AND CONFIDENTIAL

THE INFORMATION CONTAINED IN THIS DRAWING IS THE SOLE PROPERTY OF ARK-PLAS PRODUCTS, INC. ANY REPRODUCTION IN PART OR AS A WHOLE WITHOUT THE WRITTEN PERMISSION OF ARK-PLAS PRODUCTS, INC. IS PROHIBITED.

SIZE A	JOB # APT076	DRAWN BY: <i>KAH</i>	REV. LEVEL A
SCALE: 2:1 DO NOT SCALE DRAWING		SHEET 1 OF 1	