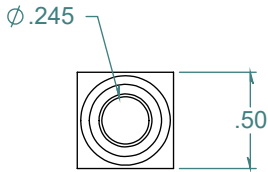
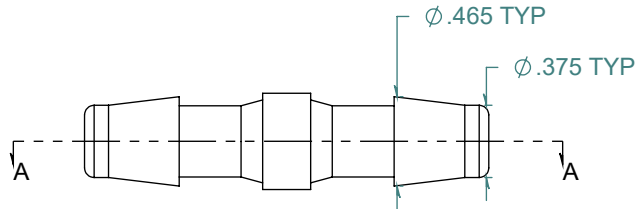
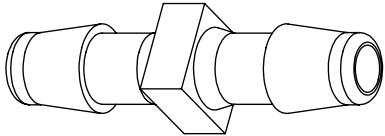
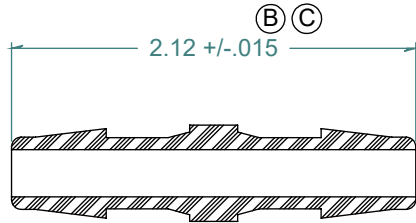


REVISION HISTORY			
REV.	DESCRIPTION	DATE	APPROVED
A	REDRAWN w/o CHANGE	07/31/2009	KAH
B	ECOR #A0520	11/11/2009	KAH
C	ECO #A1135	05/22/2018	KAH

SECTION A-A



DIMENSIONS ARE IN INCHES UNLESS SPECIFIED. TOLERANCES ARE:  
 FRACTIONS +/- .015  
 2 PLACE DECIMAL +/- .010  
 3 PLACE DECIMAL +/- .005  
 ANGLES NOTED

**ARK-PLAS PRODUCTS, INC.**

CAC59-PR0  
 3/8 x 3/8 COMMERCIAL GRADE  
 BARBED STRAIGHT CONNECTOR

MATERIAL:  
 POLYPROPYLENE, NATURAL

FINISH:  
 RMS 109.2

FREE SAMPLES ARE AVAILABLE FOR TESTING. CONTACT CUSTOMER SERVICE

**PROPRIETARY AND CONFIDENTIAL**  
 THE INFORMATION CONTAINED IN THIS DRAWING IS THE SOLE PROPERTY OF ARK-PLAS PRODUCTS, INC. ANY REPRODUCTION IN PART OR AS A WHOLE WITHOUT THE WRITTEN PERMISSION OF ARK-PLAS PRODUCTS, INC. IS PROHIBITED.

SIZE <b>A</b>	JOB # MP269	DRAWN BY: <i>KAH</i>	REV. LEVEL
	SCALE: 1:1 DO NOT SCALE DRAWING	SHEET 1 OF 1	<b>C</b>