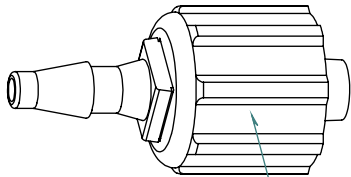
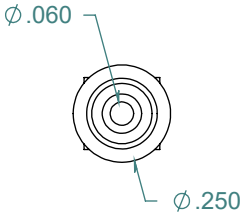
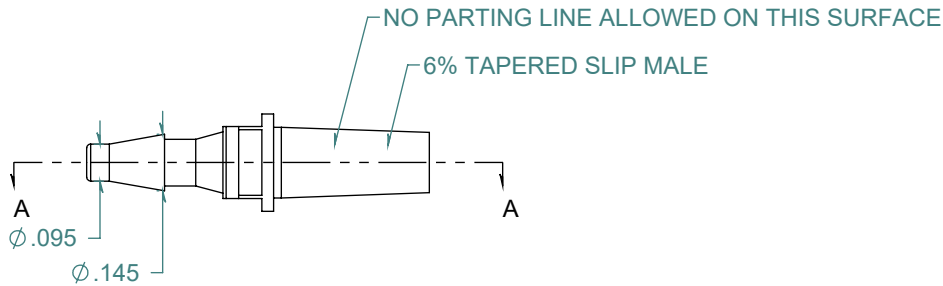
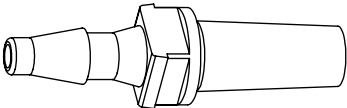
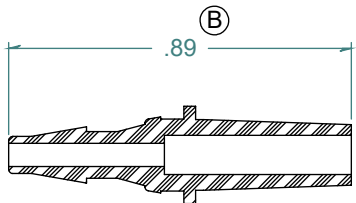


REVISION HISTORY			
REV.	DESCRIPTION	DATE	APPROVED
A	REDRAWN w/o CHANGE	10/30/2009	KAH
B	ECOR #A0506	10/30/2009	KAH

SECTION A-A



PART #AP19LNTN

FREE SAMPLES ARE AVAILABLE FOR TESTING. CONTACT CUSTOMER SERVICE

DIMENSIONS ARE IN INCHES UNLESS SPECIFIED. TOLERANCES ARE:
 FRACTIONS +/- .015
 2 PLACE DECIMAL +/- .010
 3 PLACE DECIMAL +/- .005
 ANGLES NOTED

ARK-PLAS PRODUCTS, INC.

LDX83-NY0
 3/32" BARBED MALE SLIP LUER
 FOR USE w/ LOCKING NUT

MATERIAL:
 NATURAL NYLON

FINISH:
 RMS 109.2 / POLISHED LUER

LUER DESIGNED TO **ISO** STANDARDS

SIZE	JOB #	DRAWN BY:	REV. LEVEL
A	MP024	KAH	B
SCALE: 2:1 DO NOT SCALE DRAWING		SHEET 1 OF 1	

PROPRIETARY AND CONFIDENTIAL
 THE INFORMATION CONTAINED IN THIS DRAWING IS THE SOLE PROPERTY OF ARK-PLAS PRODUCTS, INC. ANY REPRODUCTION IN PART OR AS A WHOLE WITHOUT THE WRITTEN PERMISSION OF ARK-PLAS PRODUCTS, INC. IS PROHIBITED.