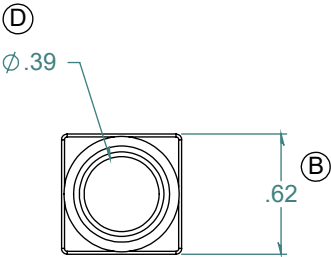
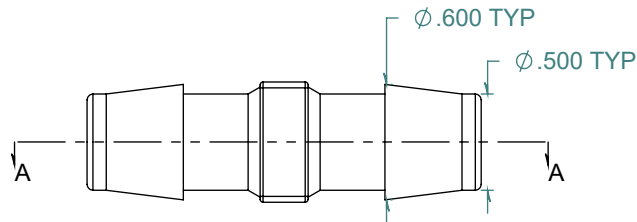
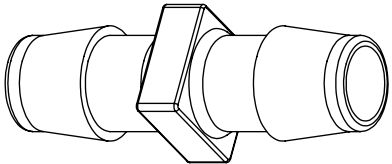
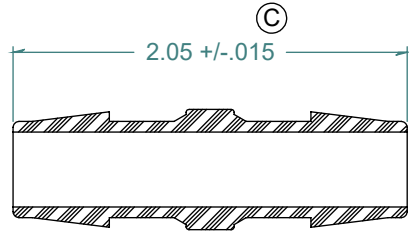


REVISION HISTORY			
REV.	DESCRIPTION	DATE	APPROVED
A	REDRAWN w/ CHANGE	07/31/2009	KAH
B	ECOR #A0149	07/31/2009	KAH
C	ECOR #A0389	07/31/2009	KAH
D	ECOR #A0997	12/13/2016	KAH

SECTION A-A



DIMENSIONS ARE IN INCHES UNLESS SPECIFIED. TOLERANCES ARE:
 FRACTIONS +/- .015
 2 PLACE DECIMAL +/- .010
 3 PLACE DECIMAL +/- .005
 ANGLES NOTED

ARK-PLAS PRODUCTS, INC.

CAC52-PR0
 1/2 x 1/2 COMMERCIAL GRADE
 BARBED STRAIGHT CONNECTOR

MATERIAL:
 NATURAL POLYPROPYLENE

FINISH:
 RMS 109.2

FREE SAMPLES ARE AVAILABLE FOR TESTING. CONTACT CUSTOMER SERVICE

PROPRIETARY AND CONFIDENTIAL

THE INFORMATION CONTAINED IN THIS DRAWING IS THE SOLE PROPERTY OF ARK-PLAS PRODUCTS, INC. ANY REPRODUCTION IN PART OR AS A WHOLE WITHOUT THE WRITTEN PERMISSION OF ARK-PLAS PRODUCTS, INC. IS PROHIBITED.

SIZE A	JOB # MP270	DRAWN BY: <i>KAH</i>	REV. LEVEL
	SCALE: 1:1 DO NOT SCALE DRAWING	SHEET 1 OF 1	D