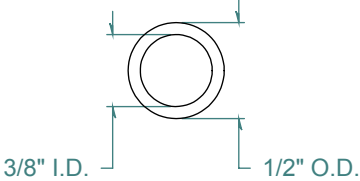
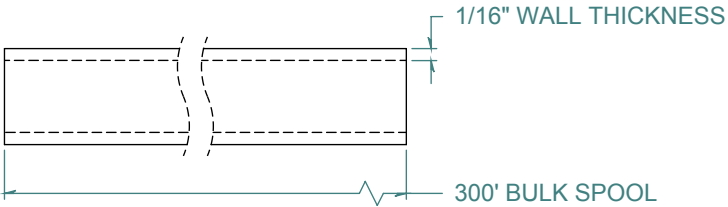
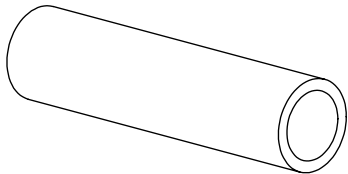


REVISION HISTORY			
REV.	DESCRIPTION	DATE	APPROVED
A	REDRAWN w/o CHANGE	05/12/2009	KAH



DIMENSIONS ARE IN INCHES UNLESS SPECIFIED. TOLERANCES ARE:

INNER DIAMETER	+/- .005
OUTER DIAMETER	+/- .005
WALL THICKNESS	+/- .003

LENGTH TOLERANCES ARE:

120. OR MORE	+5% / -0
24.1 TO 120.	+1.0 / -0
12.1 TO 24.0	+ .5 / -0
6.1 TO 12.0	+ .25 / -0
.375 TO 6.0	+ .125 / -0

**ARK-PLAS PRODUCTS, INC.**

TAX79-AN1  
 3/8" I.D. x 1/2" O.D.  
 1/16" WALL THICKNESS / 300' BULK SPOOL

BLACK TUBING

FREE SAMPLES ARE AVAILABLE FOR TESTING. CONTACT CUSTOMER SERVICE

**PROPRIETARY AND CONFIDENTIAL**

THE INFORMATION CONTAINED IN THIS DRAWING IS THE SOLE PROPERTY OF ARK-PLAS PRODUCTS, INC. ANY REPRODUCTION IN PART OR AS A WHOLE WITHOUT THE WRITTEN PERMISSION OF ARK-PLAS PRODUCTS, INC. IS PROHIBITED.

MATERIAL: POLYURETHANE / ETHER BASED - 85 DUROMETER			
SIZE	JOB #	DRAWN BY:	REV. LEVEL
<b>A</b>	APT118	KAH	<b>A</b>
SCALE: 1:1 DO NOT SCALE DRAWING		SHEET 1 OF 1	