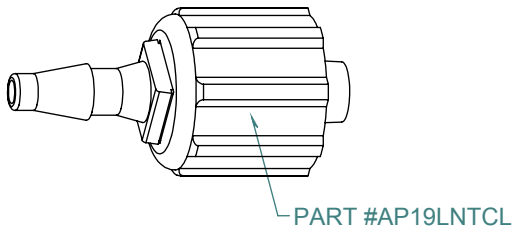
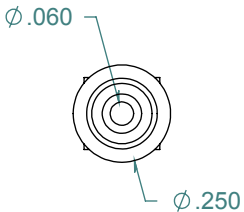
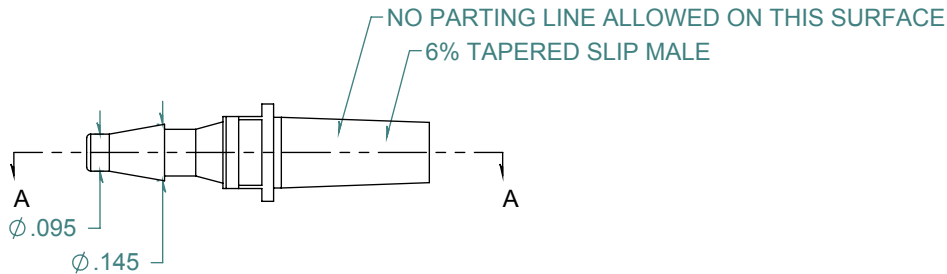
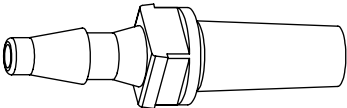
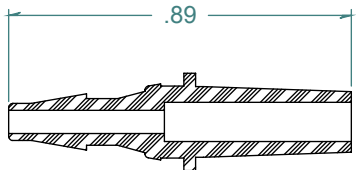


REVISION HISTORY			
REV.	DESCRIPTION	DATE	APPROVED
A	REDRAWN w/o CHANGE	10/30/2009	KAH

SECTION A-A



FREE SAMPLES ARE AVAILABLE FOR TESTING. CONTACT CUSTOMER SERVICE

DIMENSIONS ARE IN INCHES UNLESS SPECIFIED. TOLERANCES ARE:  
 FRACTIONS +/- .015  
 2 PLACE DECIMAL +/- .010  
 3 PLACE DECIMAL +/- .005  
 ANGLES NOTED

**ARK-PLAS PRODUCTS, INC.**

LDX83-YC0  
 3/32" BARBED MALE SLIP LUER  
 FOR USE w/ LOCKING NUT

MATERIAL:  
 CLEAR POLYCARBONATE

LUER DESIGNED TO **ISO** STANDARDS

FINISH:  
 RMS 109.2 / POLISHED LUER

SIZE <b>A</b>	JOB # MP024	DRAWN BY: <i>KAH</i>	REV. LEVEL
SCALE: 2:1 DO NOT SCALE DRAWING	SHEET 1 OF 1		<b>A</b>

**PROPRIETARY AND CONFIDENTIAL**

THE INFORMATION CONTAINED IN THIS DRAWING IS THE SOLE PROPERTY OF ARK-PLAS PRODUCTS, INC. ANY REPRODUCTION IN PART OR AS A WHOLE WITHOUT THE WRITTEN PERMISSION OF ARK-PLAS PRODUCTS, INC. IS PROHIBITED.